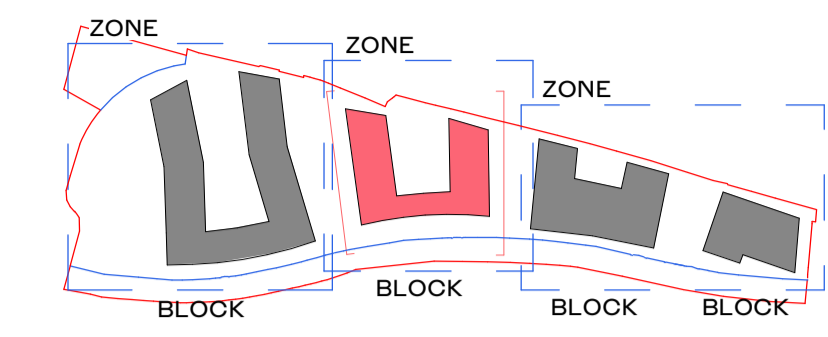


ALL DIMENSIONS TO BE CHECKED ON SITE
 NO DIMENSIONS TO BE SCALED FROM THIS DRAWING
 DRAWING IS TO BE READ IN CONJUNCTION WITH RELEVANT CONSULTANTS DRAWINGS



SITE DRAWINGS LEGEND:
 REFER TO BARRET MAHONY CIVIL ENGINEERING DRAWINGS FOR ALL DRAINAGE/ ROAD INFORMATION.
 SURVEY INFORMATION PROVIDED BY JONES ENGINEERING ON 23.4.2019.
 PLEASE REFER TO THE PAUL HOGARTH COMPANY LANDSCAPE DRAWINGS FOR ALL INFORMATION ON EXISTING AND PROPOSED TREES, MATERIAL FINISHES AND LAYOUT. ANY REFERENCE TO TREES/ HARD OR SOFT LANDSCAPING IN THIS DRAWING ARE INDICATIVE ONLY.

HJL_ELEVATION FINISHES LEGEND

| Key Value | Keynote Text |
|-----------|---|
| 01 | TEXTURED BRICK FROM SELECTED PALETTE |
| 02 | CERAMIC PANELS OR POLISHED RECONSTITUTED STONE PANEL |
| 03 | COMPOSITE ALUMINIUM FRAME WINDOW SYSTEM TO SELECT FINISH |
| 04 | PPC STEEL BALUSTRADE TO SELECT FINISH |
| 06 | PRECAST CONCRETE LINTEL |
| 07 | PPC ALUMINIUM PANEL TO SELECT RAL FINISH |
| 08 | BAGUETTE STYLE CERAMIC OR POLISHED RECONSTITUTED STONE SCREEN |
| 09 | CAST IN SITU FAIR FACED CONCRETE |
| 10 | FAIR FACED CONCRETE LOW RISE WALL |
| 11 | TOSOLE FIXED GLAZING WITH POWDER COATED VERTICAL MULLIONS TO SELECTED RAL |
| 12 | TEXTURED BRICK SOLDIER COURSE FROM SELECTED PALETTE |
| 13 | FAIR FACED CONCRETE PLINTH |
| 14 | PPC ALUMINIUM LOUVRES |
| 15 | METAL LETTERING - BUILDING |
| 16 | METAL LETTERING - SHOP, RESTAURANT |
| 17 | PPC ALUMINIUM DOOR TO SELECT RAL FINISH |
| 18 | VERTICAL METAL SCREWS |



ALL APARTMENT TYPES SHOULD BE READ IN CONJUNCTION WITH DRAWING NO.S P1601, P1602, P1603, P1604 AND HOUSING QUALITY

| REV | DATE | DESCRIPTION | CHK | DRN |
|-----|------------|------------------------------|-----|-----|
| P2 | 26/11/2019 | ISSUED FOR PLANNING APPROVAL | DB | OJ |
| P1 | 05/08/2019 | ISSUED FOR PAC REQUEST | DB | OJ |

STATUS CODE DESCRIPTION
ISSUED FOR PLANNING APPROVAL

CLIENT
 Atlas GP Limited

PROJECT
 Project Claremont

DRAWING
 BLOCK B - ELEVATIONS 01
 EAST & WEST ELEVATION

| | |
|----------------------------|--------------------------|
| PROJECT NUMBER 950520 | DATE 26/11/19 |
| SCALE@ A1: As indicated | DRAWN/CHECKED: OJ/ DB |

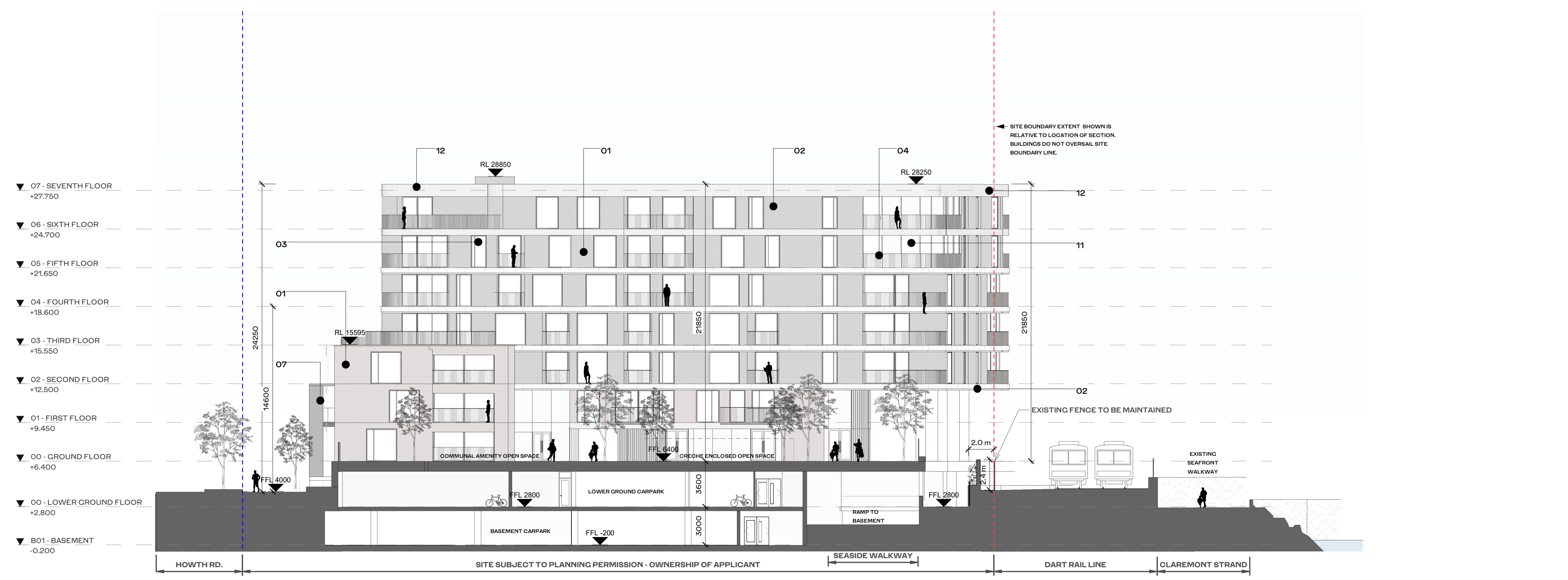
| REVISION | DRAWING NUMBER | STATUS CODE: |
|----------|--------------------------|--------------|
| P2 | CLR-HJL-02-XX-DR-A-2001B | A1 |

Henry J Lyons

Architecture + Interiors
 henryjlyons.com
 +353 1 888 3333
 info@henryjlyons.com
 53-54 Pearse Street
 Dublin D02 K466



1 BLOCK B - WEST ELEVATION
 1:200



2 BLOCK B - EAST ELEVATION
 1:200